

MONTHLY MEMBERSHIP PROGRESS REPORT

District 33 N

Results as of: 5/31/2026

GMT:

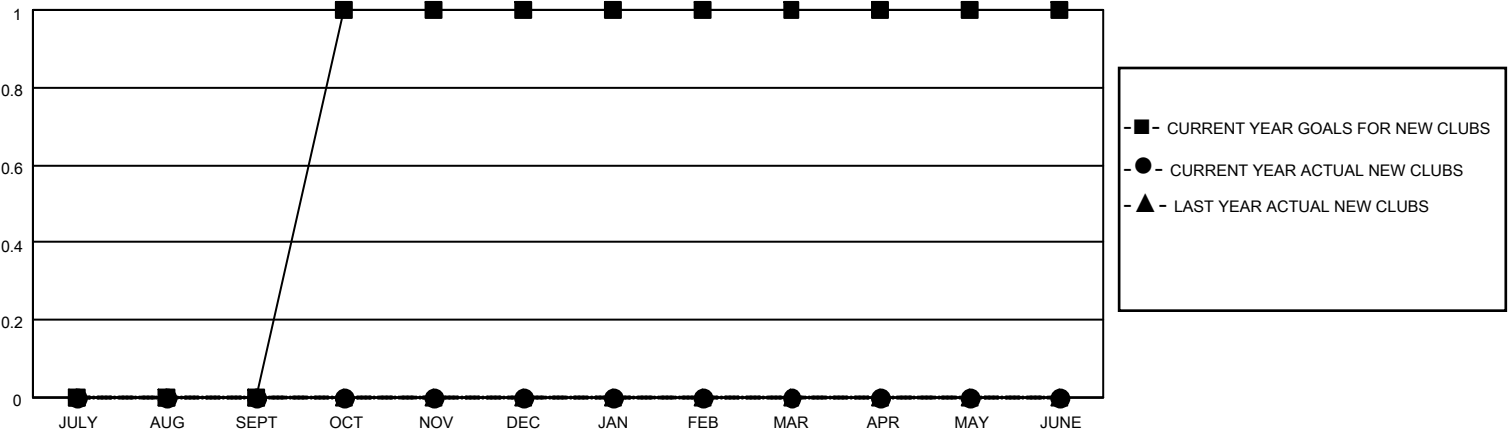
LOCATION MASSACHUSETTS

GMT CA

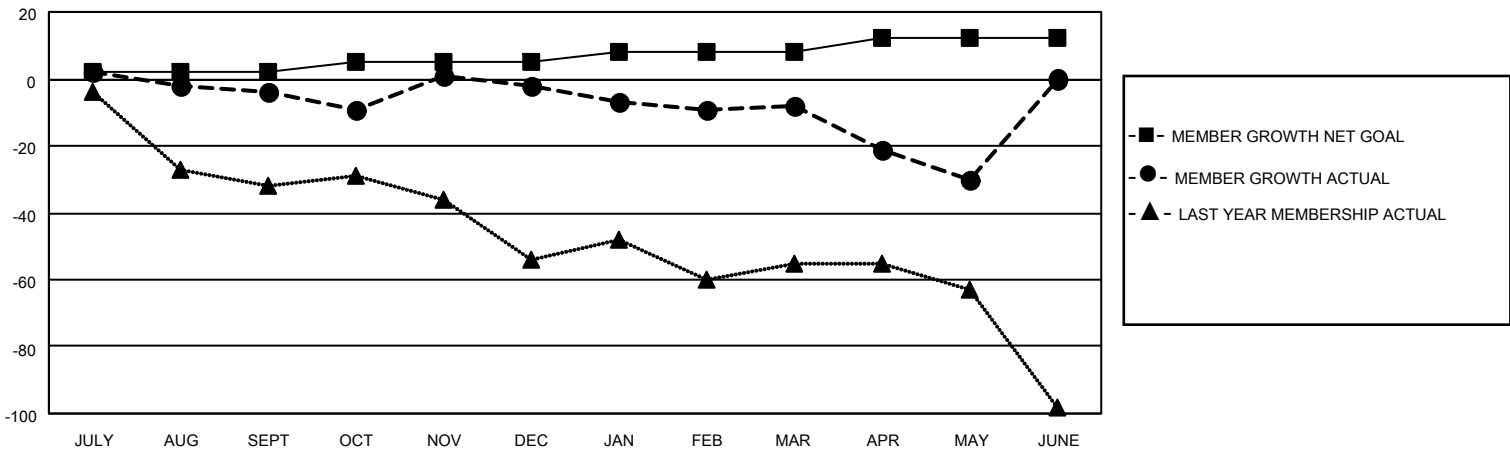
Clubs			
RESULTS FOR 2025-2026			
QUARTER	NEW CLUB GOAL	NEW CLUBS	DROPPED CLUBS
JULY/AUG/SEPT	0	0	0
OCT/NOV/DEC	1	0	0
JAN/FEB/MAR	0	0	0
APR/MAY/JUNE	0	0	1

Members			
RESULTS FOR 2025-2026			
QUARTER	MEMBER GROWTH NET GOAL	MEMBER GROWTH ACTUAL	DROPPED MEMBERS ACTUAL (including transfers)
JULY/AUG/SEPT	2	19	21
OCT/NOV/DEC	3	26	21
JAN/FEB/MAR	3	19	19
APR/MAY/JUNE	4	10	27

GOALS AND ACTUAL NEW CLUBS CUMULATIVE



GOALS AND ACTUAL MEMBERS CUMULATIVE



DROPPED CLUBS: 1	19 CLUBS OF 37 ADDED 1 OR MORE NEW MEMBERS	GENDER DISTRIBUTION MALE 578 (57.63%) FEMALE 425 (42.37%)
DROPPED MEMBERS DECEASED 21 CLUB CANCELLED 15 OTHER 52 TOTAL 88	CLICK HERE FOR CUMULATIVE MEMBERSHIP DATA	TOTAL FAMILY UNIT MEMBERS 133 FAMILY MEMBERS PAYING HALF DUES 69